



WiMeter


AI-Powered Critical Systems Monitor & Smart Electricity Meter





 **Reduce Your Energy Bills:** Get a full picture of the energy costs of each electrical device in your facility. Identify inefficient devices.

 **Monitor Equipment Health & Improve Reliability:** Prevent major issues and ensure optimal performance with real-time AI alerts for abnormal power usage.

 **Cut High Repair & Maintenance Costs:** Take action before minor issues become costly problems.

 **Reduce Equipment Downtime:** Minimize unexpected breakdowns and extend equipment lifespan.

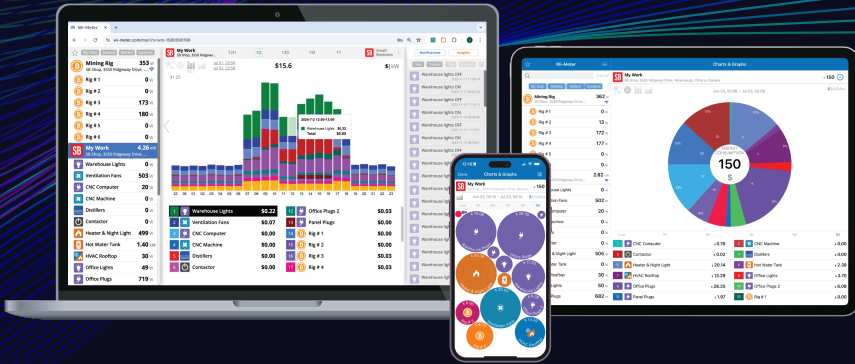
 **Optimize Energy & Workload:** Implement energy-saving strategies and streamline equipment workload with real-time data analytics.

 **Go Green:** Improve the environment by reducing your energy footprint.





Peace Of Mind & Full Insight AI-Powered Intelligent Monitoring



Multi-Channel Electrical Circuit Monitoring: Monitor up to 28 circuits, including single-phase, split-phase, and three-phase, with one device. Combine devices to expand the monitoring footprint.



Temperature Monitoring For Downtime Prevention: Monitor your critical equipment with up to 4 sensors per device and receive alerts for abnormalities.



Distributed Locations Support: Monitor the health of multiple equipment in various locations from one screen.



Share Device Readings: Alert service technicians and others of equipment malfunctions.



Easy Setup & User-Friendly Interface: Install non-invasively on any circuit breaker panel. Customize dashboards to display relevant data.

